



**SAFE
SCHOOLS
AFRICA**



Ayikai Poswayo, Programme Director, Amend
17th April 2026



ABOUT AMEND

Who we are...

A non-profit organisation with a goal to save lives and make lives better.

What we do...

Deliver safe and healthy journeys and improved environments in developing countries through a variety of programmes.





SAFE SCHOOLS AFRICA PROGRAMME

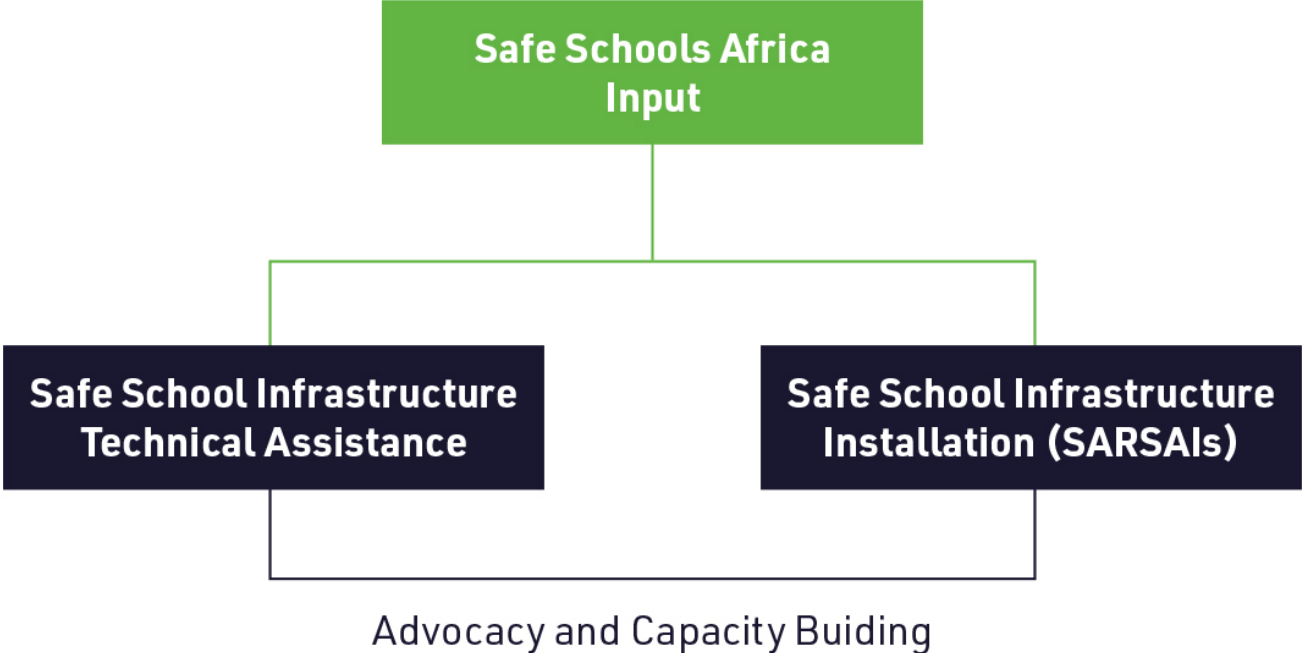


**SAFE
SCHOOLS
AFRICA**

PARTNERSHIP



COMPONENTS



SAFE SCHOOL INFRASTRUCTURE (SARSAIS)



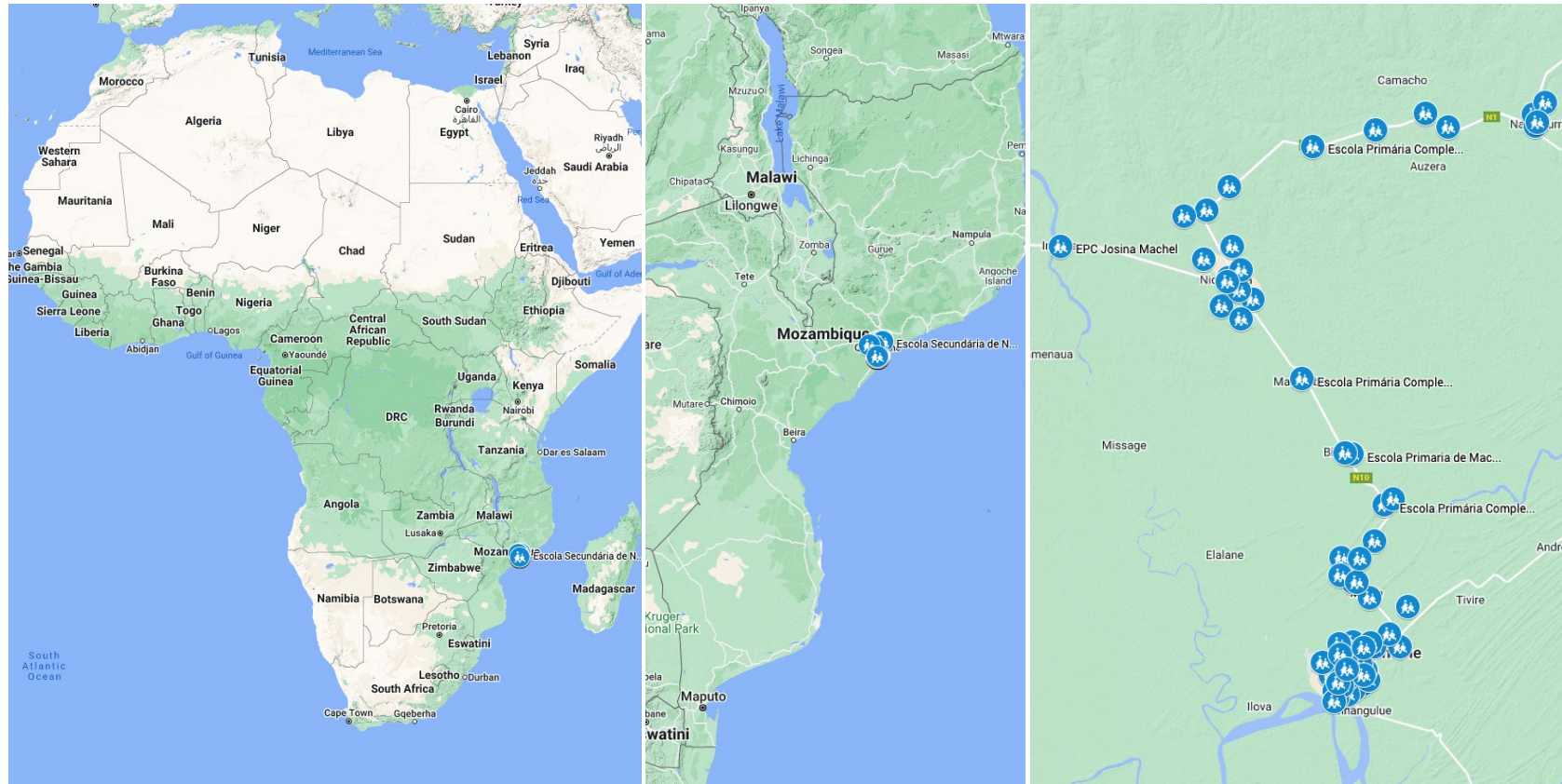
Before



After

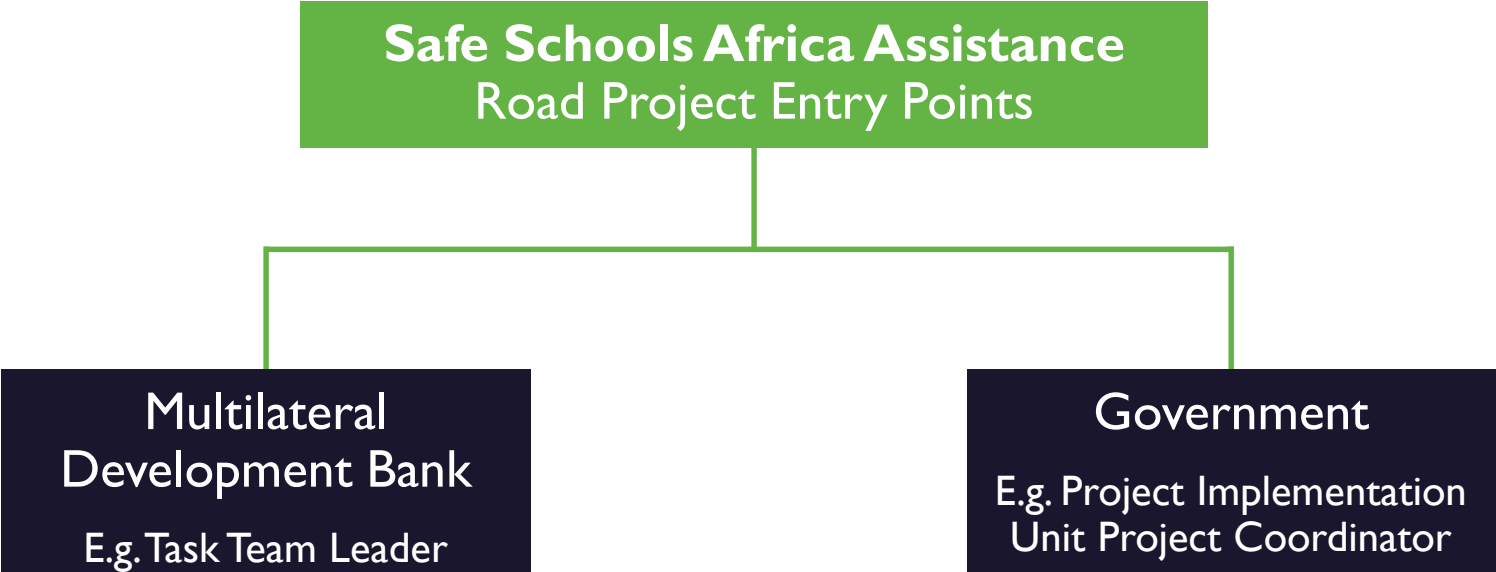
PROGRAMME DEVELOPMENT (2020–2022)

- The African continent still under massive development with new roads being built every day
- Example one road project in Mozambique:
 - 67km of Road (NI/N10)
 - 43 schools
 - >76,000 children



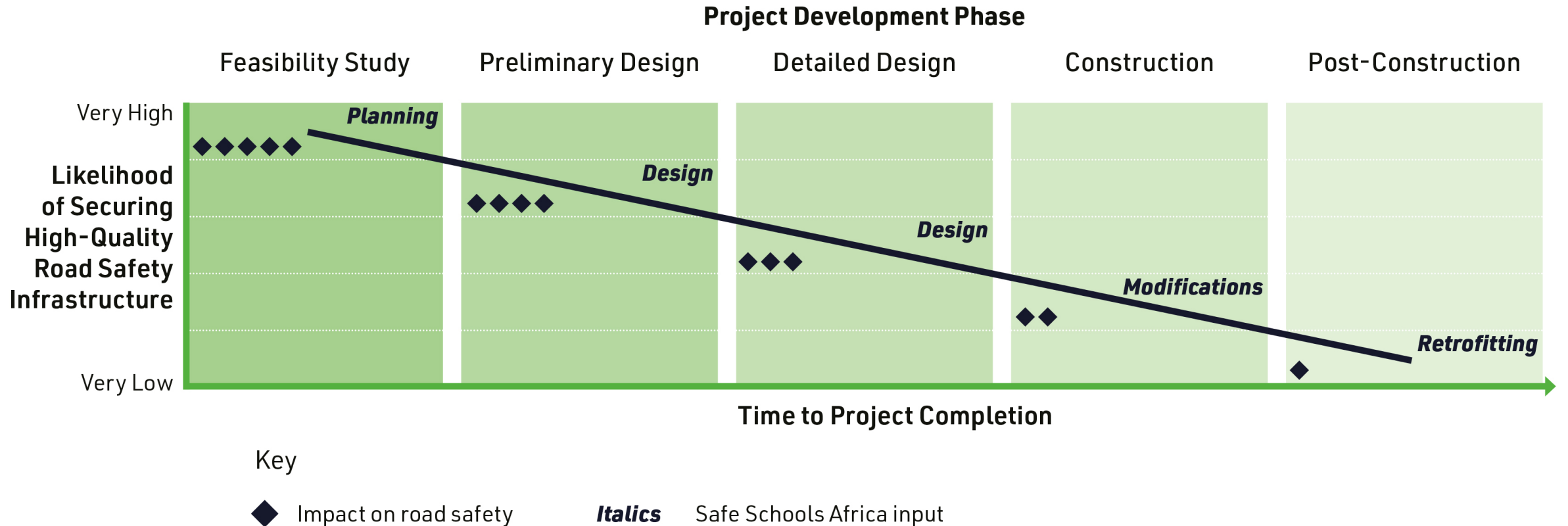
COMPONENT 2

Assistance on MDB Financed Road Projects – Project Entry Points



COMPONENT 2

Assistance on MDB Financed Road Projects – Project Phase vs Ease of Implementation of Road Safety Measures



COMPONENT 2

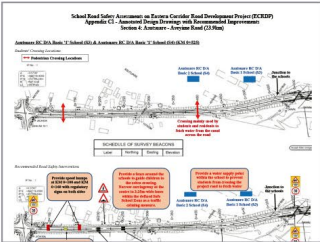
Assistance on MDB Financed Road Projects – Safe Schools Africa Stages



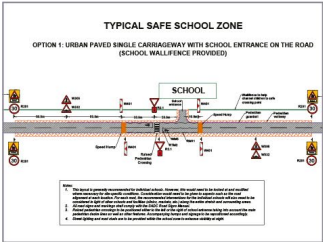
Stage 2
Reconnaissance
Field Visits, Mapping of Schools
& Initial Data Collection



Stage 4
Detailed Data
Collection at
Selected Schools



Stage 6
Summary of
Findings and
Recommendations



Stage 8
Project Team Consideration of
Recommendations & Incorporation
into Designs, if Accepted



Stage 10
Construction
Complete
(Built Results)



Stage 1
Project Identification &
Stakeholder Engagement



Stage 3
Presentation of Initial Data Summary
to Project Teams



Stage 5
Data
Analysis

B3: Speed Surveys

Table B3: Speed Characteristics of Vehicles around the GEM Selected Schools

Name of School	Period	10th Percentile Speed (km/h)	Average Speed (km/h)	Maximum Individual Speed Recorded (km/h)	Type of Vehicle Operating
Asumuam Easton D/A Basic 'T' & Basic 'U' Schools	6:00am - 7:30am	47	36	80	Motorcycle
Asumuam West D/A Basic 'T' & Basic 'U' Schools	6:30am - 7:30am	39	23	53	Motorcycle
Evanwa Amahaye D/A Basic School	6:30am - 7:30am	30	23	58	Motorcycle
Ashange D/A Basic School	6:00am - 6:00am	20	15	26	Motorcycle
Talpey BC Basic School	6:30am - 6:00am	37	29	45	Motorcycle
Arenawa Mafanohu D/A Basic & BC Basic Schools	6:00am - 7:30am	34	27	42	Motorcycle
Dofin Adikwe D/A Basic School	6:30am - 6:00am	62	45	85	Saloon car

Stage 7
Presentation of Findings and
Recommendations to Project Team



Stage 9
Support and Monitoring during
Construction



Stage 11
Road Safety Education & Advocacy
Event (if Applicable)



COMPONENT 2

Assistance on MDB Financed Road Projects – Mapping of Schools



COMPONENT 2

Assistance on MDB Financed Road Projects – In-School Assessments

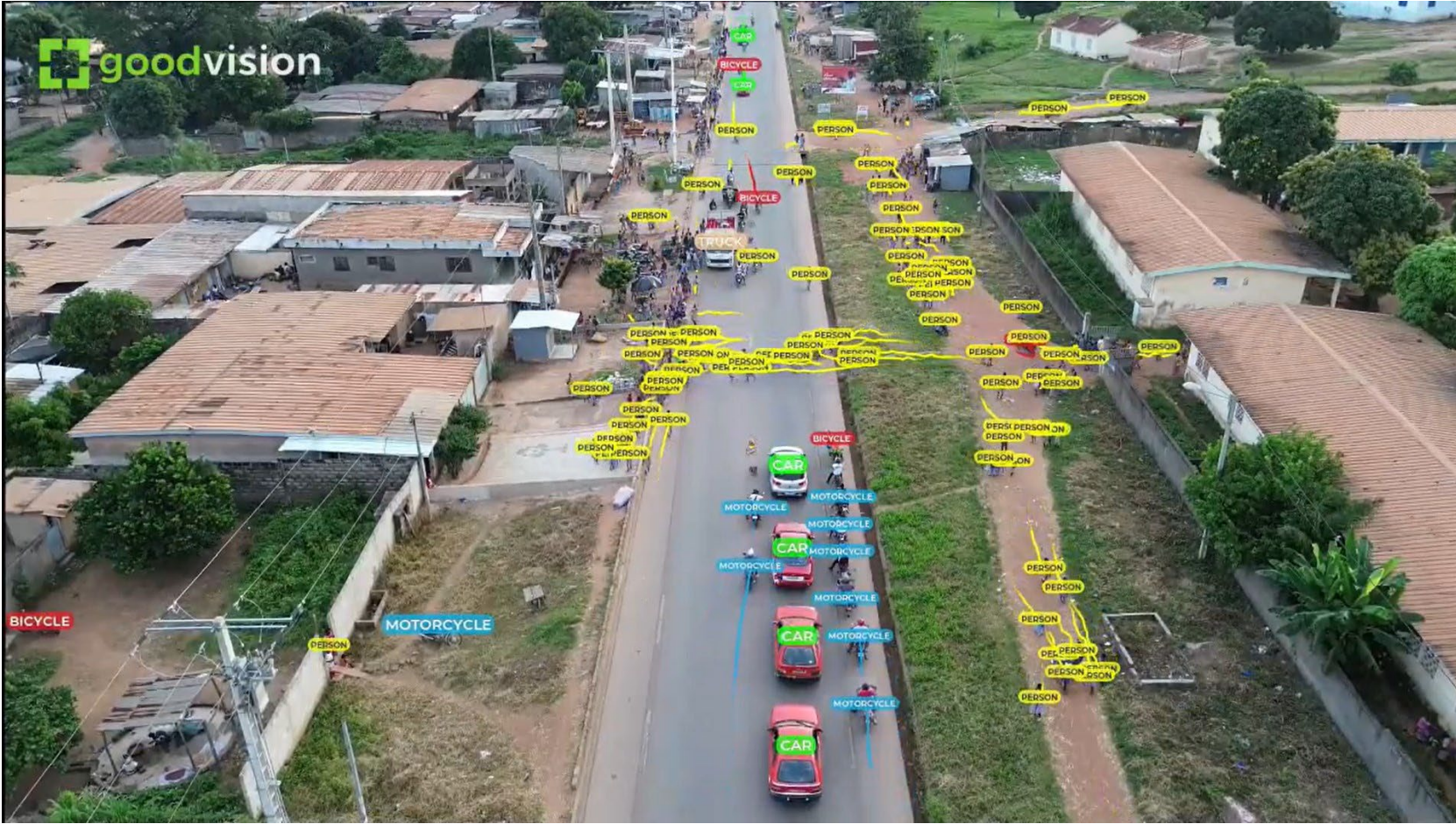


COMPONENT 2

Assistance on MDB Financed Road Projects – On-Street Assessments



USE OF TECHNOLOGY



USE OF TECHNOLOGY



USE OF TECHNOLOGY



■ Pedestrian ■ Car ■ Motorcycle

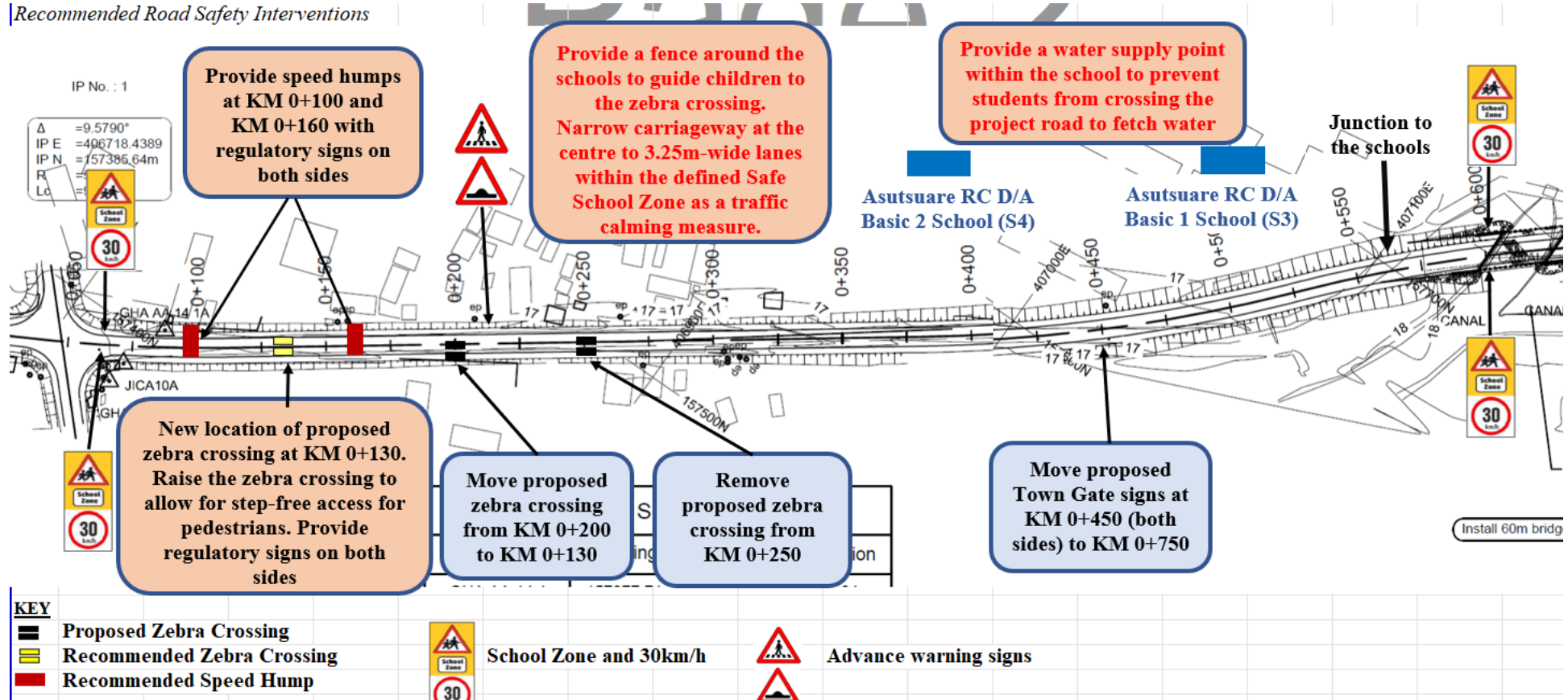
COMPONENT 2

Assistance on MDB Financed Road Projects – Meetings with Project Teams



COMPONENT 2

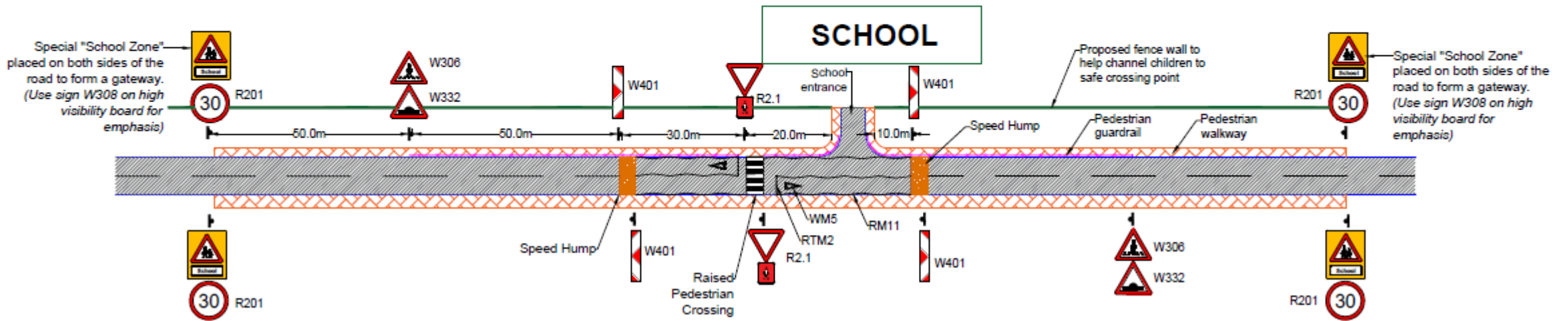
Assistance on MDB Financed Road Projects – Example of Recommendations



COMPONENT 2

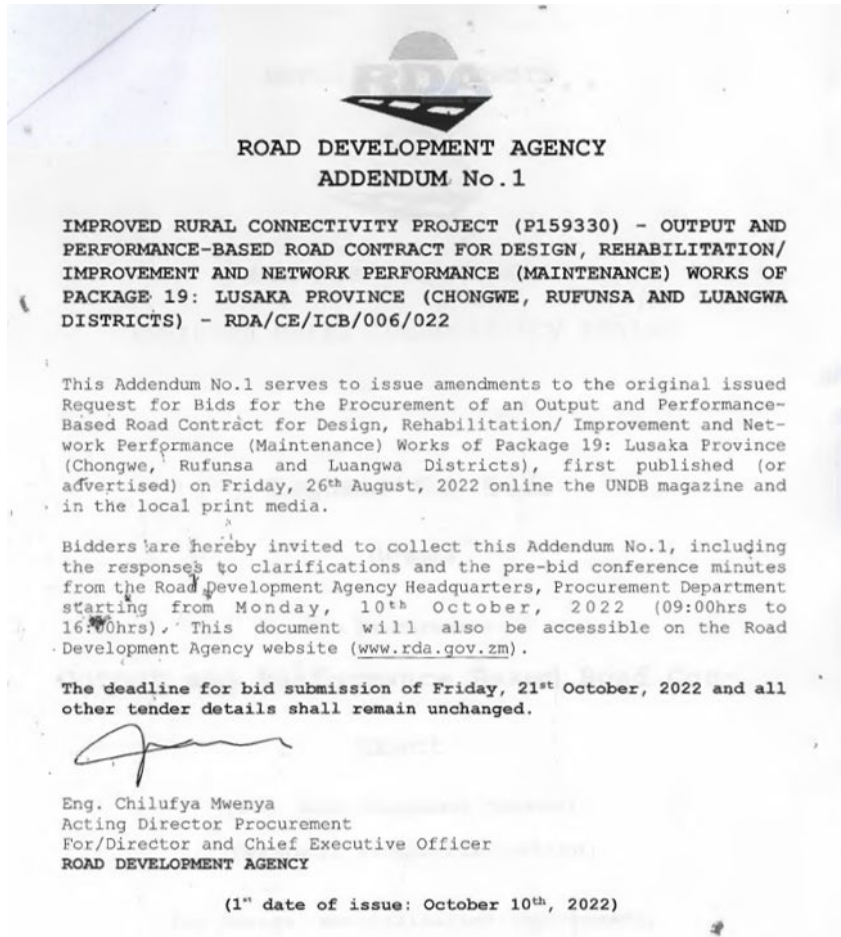
Assistance on MDB Financed Road Projects – Example of Recommendations

**TYPICAL SAFE SCHOOL ZONE
LAYOUT 1A - URBAN AREA (SCHOOL ENTRANCE ON PROJECT ROAD)**



COMPONENT 2

Assistance on MDB Financed Road Projects – Example RfP Addendum



**SCHEDULE OF
TEXTUAL AMENDMENTS AND CORRECTIONS
IN THE BIDDING DOCUMENT "ADDENDUM NO.1"**

Table 1: ADDENDUM NUMBER 1 (Package 19)

Document	Reference	Amended text
Volume 2 - Concept Design for Package 19, and Volume 3 - Standard Drawings	Standard Drawings	Add the following Standard Drawing "Typical Layout for School Zone" as provided in the attached drawing. The "Typical Layout for the School Zone" drawing provides the minimum safety requirements for sections of roads passing through or near schools. The schedule of the identified schools on this package is also attached to this addendum.

COMPONENT 2

Assistance on MDB Financed Road Projects – Construction Period



CURRENT PROJECTS

Ghana

- Technical Assistance on ECRDP Section 3 & 4 (paved rural roads), African Development Bank
- Technical Assistance on ECRDP Northern Orbital (paved urban roads), African Development Bank

Côte d'Ivoire

- Installation of Safe School Zones
- Technical Assistance on MAMBO project, Agence Française de Développement

Senegal

- Installation of Safe School Zones

Sao Tomé & Príncipe

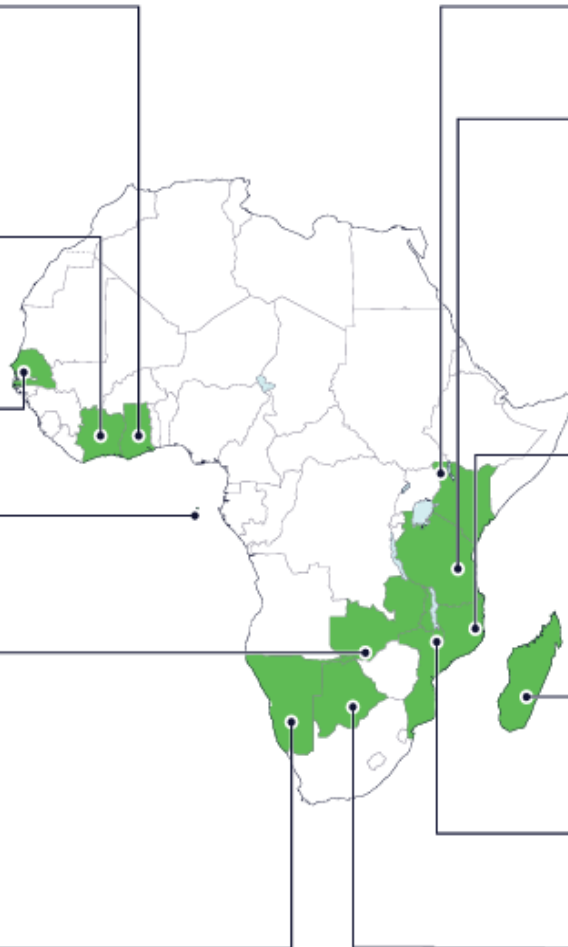
- Technical Assistance on EN1 (paved trunk road), World Bank

Zambia

- Technical Assistance on IRCP project (unpaved rural roads), World Bank
- Technical Assistance on T2 Mpika-Chinsali project (paved trunk road), European Investment Bank
- Technical Assistance on TRACER T2 Serenje to Mpika project (paved trunk road), World Bank

Namibia

- Installation of Safe School Zones



Kenya

- Installation of Safe School Zones

Tanzania

- Technical Assistance on RISE (paved rural roads), World Bank
- Technical Assistance on DMDP2 (paved urban roads), World Bank
- Technical Assistance on Safe Roads to Schools in Tanzania project (paved urban, trunk and rural roads), World Bank
- Installation of Safe School Zones

Mozambique

- Assistance on IFRDP (paved trunk road), World Bank
- Assistance on MOVE (paved urban roads), World Bank
- Installation of Safe School Zones

Madagascar

- Technical Assistance on RN6 (paved trunk road), European Investment Bank

Malawi

- Installation of Safe School Zones

Botswana

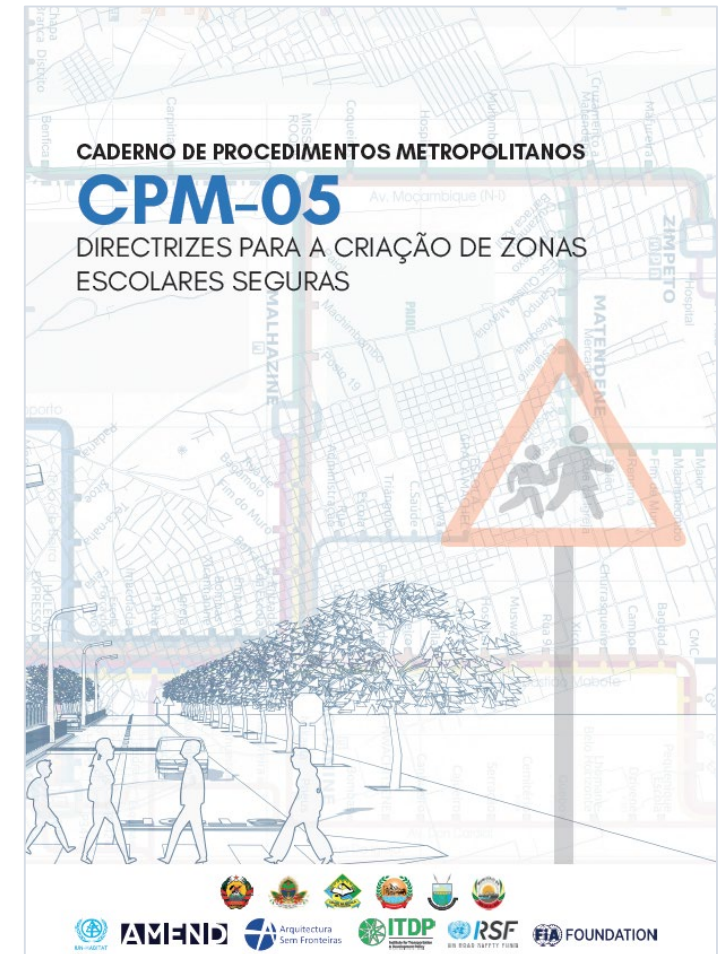
- Installation of Safe School Zones

CURRENT PROJECTS

	Project Preparation: Feasibility Study	Preliminary Design	Loan Approval from Bank	Procurement (Engineering Consultants & Contractors)	Detailed Design	Construction	Construction Complete	Safe Schools Africa Project Stage (of 11)
ACTIVE PROJECTS								
Ghana: African Development Bank – Eastern Corridor Road Development Programme (ECRDP) – Lots 3 & 4	█	█	█	█	█	█	█	Stage 9
Ghana: African Development Bank Eastern Corridor Road Development Programme (ECRDP) – Northern Orbital	█	█	█	█	█	█	█	Stage 6
Madagascar: European Investment Bank (EIB) – RN6 (Antsiranana)	█	█	█	█	█	█	█	Stage 2
Mozambique: World Bank – Integrated Feeder Roads Development Project (IFRDP) – N1/N10	█	█	█	█	█	█	█	Stage 9
Mozambique: World Bank – Maputo Metropolitan Area Urban Mobility Project (MOVE) – Connector Roads	█	█	█	█	█	█	█	Stage 9
Mozambique: World Bank – Maputo Metropolitan Area Urban Mobility Project (MOVE) – BRT Corridor	█	█	█	█	█	█	█	Stage 5
Sao Tome and Principe: World Bank – National Road 1 (EN1) Rehabilitation – Section 2& 3	█	█	█	█	█	█	█	Stage 8
Tanzania: World Bank – Roads to Inclusion & Socioeconomic Opportunities (RISE) – Iringa Roads	█	█	█	█	█	█	█	Stage 11
Tanzania: Dar es Salaam Metropolitan Development Project II (DMDP II)	█	█	█	█	█	█	█	Stage 8
Zambia: World Bank – Improved Rural Connectivity Project (IRCP) – Lusaka Package 19	█	█	█	█	█	█	█	Stage 8
Zambia: European Investment Bank (EIB) – T2 (Mpika to Chinsali Road)	█	█	█	█	█	█	█	Stage 7
Zambia: World Bank Transport Corridors for Economic Resilience Project (TRACER) – T2 (Serenje to Mpika Road)	█	█	█	█	█	█	█	Stage 5

CHALLENGES & OPPORTUNITIES

- Length of road projects (2-10 years and longer)
- Changes within project teams (government, MDBs etc)
- Timing of Safe Schools Africa Input & budget commitment for recommendations
- Partial implementation of recommendations
- Addressing challenge of traffic calming for motorcycle riders
- Influencing policy – safe school zone guides



OUTCOMES & ACHIEVEMENTS

- Built results
- More partners coming on board and committing funding
- Budget allocations for infrastructure
 - > US\$2million from project budgets
 - > US\$3million from additional donor partners
- Coalition of Safe Schools Africa partners. Igniting momentum for change on how road projects in Africa are conceived, designed and built



REGIONAL FORUM

Dar Es Salaam (May 2025)



ROUNDTABLE DISCUSSION

Johannesburg (November 2025)



