

The background of the slide is a light blue field filled with a repeating pattern of small, white line-art icons. These icons represent various modes of sustainable transportation, including bicycles, buses, trains, trucks, cars, ships, and pedestrians. A large, solid dark blue vertical bar is positioned on the left side of the slide, partially overlapping the text.

SUSTAINABLE mobilityTM FOR ALL

FROM FRAMING SUSTAINABLE MOBILITY TO ACTION

PRESENTED BY: NICOLAS PELTIER

SSATP ANNUAL MEETING, NOVEMBER 2019



THE STATE OF MOBILITY TODAY

THE GLOBAL MOBILITY SYSTEM IS OFF TRACK

Many Excluded

450 M (est.)

people in Africa do not have access to an all-weather road.

Road Traffic Fatalities

1.35M fatalities per year attributed to road transport.

Gender Based Violence

6 in 10 women in major Latin Americans cities are subject to physical harassment using transport systems.

Air Pollution

8.8 M people killed by ambient air pollution annually.

High Logistical Costs

20% lower GDP in countries with no access to the sea.

Greenhouse Gas Emissions

25% of global energy related greenhouse gas emissions attributed to the transport sector.



POTENTIALLY, TRANSPORT CAN TRANSFORM LIVES

Rural Connectivity

1 Billion

People connected to education, health and jobs by eliminating the rural transport access gap.

Toward Zero-fatalities

800,000

Deaths avoided per year if all countries reduced their road traffic fatalities to OECD level.

Gender Neutrality

20+ Million

More jobs for women by realizing gender parity in the transport sector.

Air Pollution

1.6 Million

People would breathe cleaner air if transport pollution was halved.

Economic Growth

USD 2.6 T (est.)

Increase in global GDP if border administration, transport and communications infrastructure improved.

Toward Carbon Neutrality

1.8 Gt CO₂

Reduction in Transport related emissions if top emitting countries bring their emissions down to their income group median.





THE SUM4ALL PARTNERSHIP

UNIFYING VOICES

Established in 2017 and hosted by the World Bank, SuM4All has become a pivotal platform for international cooperation on issues related to transport and sustainable mobility.



UNIFIED VISION

Sustainable Mobility

POLICY GOALS



UNIVERSAL ACCESS

Connect all people, including women, and communities to economic and social opportunities.



EFFICIENCY

Optimize its predictability, reliability and cost-effectiveness



SAFETY

Drastically reduce fatalities, injuries, and crashes (SDG Target 3.6)



GREEN MOBILITY

Abate the environmental footprint of mobility (GHG emissions, noise and air pollution)

IN SUPPORT OF SDGs

The 4 Policy goals indirectly support all 17 SDG's, with direct impact on the following:

POLICY GOALS



**UNIVERSAL
ACCESS**



EFFICIENCY



SAFETY



**GREEN
MOBILITY**



SDGs



5.1, 5.2, 5.5, 9.1, 10.7
11.2



7.3, 9.1, 9.4,
12.3, 12c, 17.14



3.6, 11.2



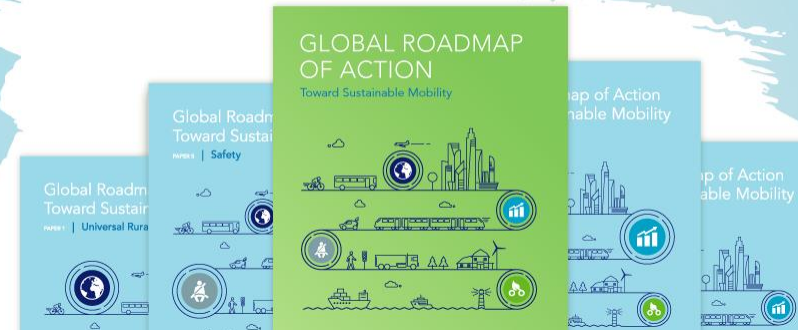
3.4, 3.9, 7.3, 9.4, 11.6,
13.1, 13.2



THE GLOBAL ROADMAP OF ACTION

WHAT IS THE **GRA**?

GLOBAL ROADMAP OF ACTION TOWARD SUSTAINABLE MOBILITY



A tool to:

- ✓ **Measure** how far a country is from achieving sustainable mobility
- ✓ **Explore** 182 policy measures that have been tested around the world
- ✓ **Prioritize** those that are most impactful and lay out a path forward

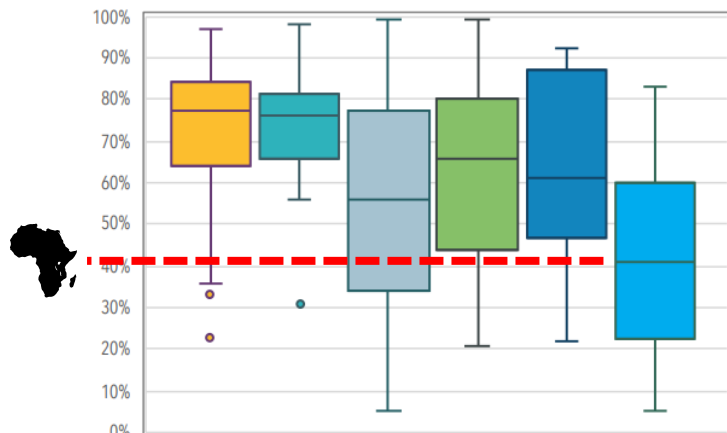
It represents the best knowledge that we have at our disposal on "**how to**" **achieve sustainable mobility**.

MEASURE: REGIONAL MOBILITY PERFORMANCE



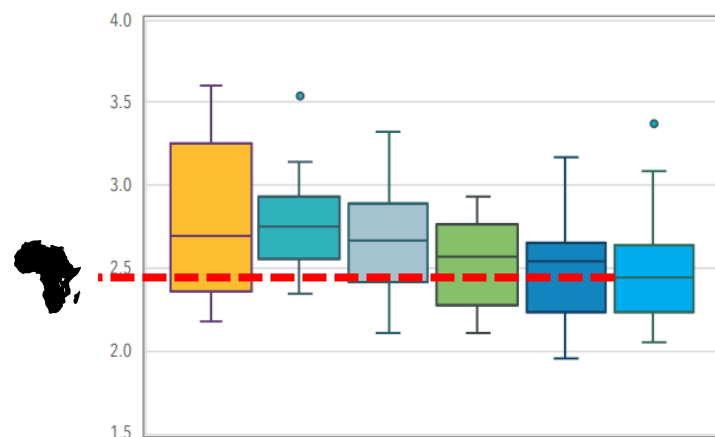
Rural Access Index

Developing Countries, Percentage, 1999-2004



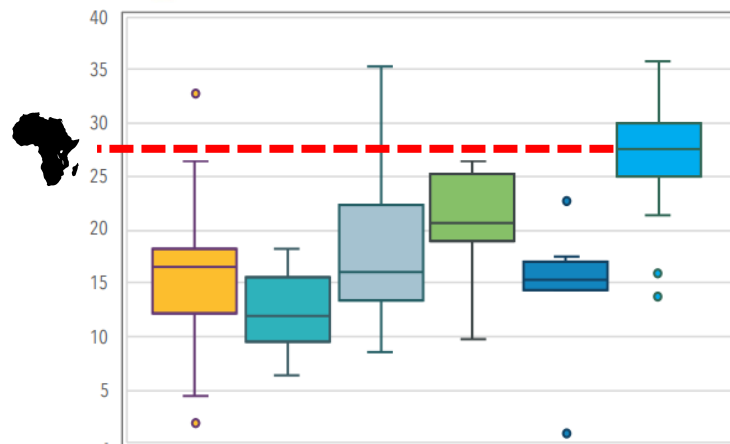
Logistics Performance Index

Developing Countries, Index from 1-5, 2018



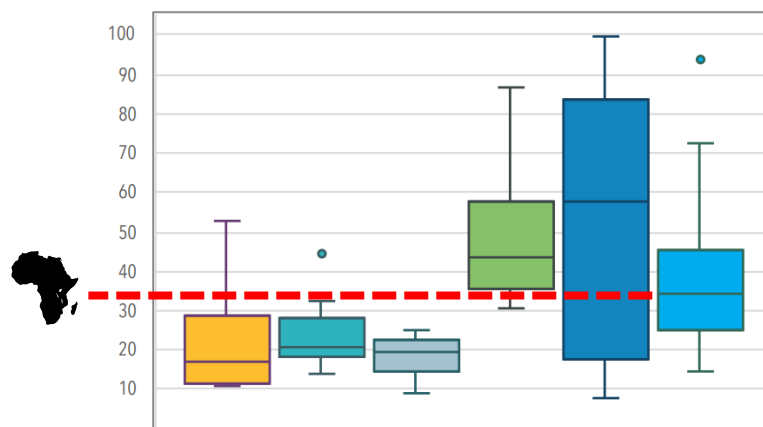
Mortality Caused by Road Traffic Injuries

Developing Countries, per 100,000 people, 2016



PM2.5 Air Pollution Annual Exposure

Developing Countries, ug/cu.m, 2016



East Asia & Pacific

Europe & Central Asia

Latin America & Caribbean

Middle East & North Africa

South Asia

Sub-Saharan Africa

MEASURE: COUNTRY MOBILITY PERFORMANCE



Argentina

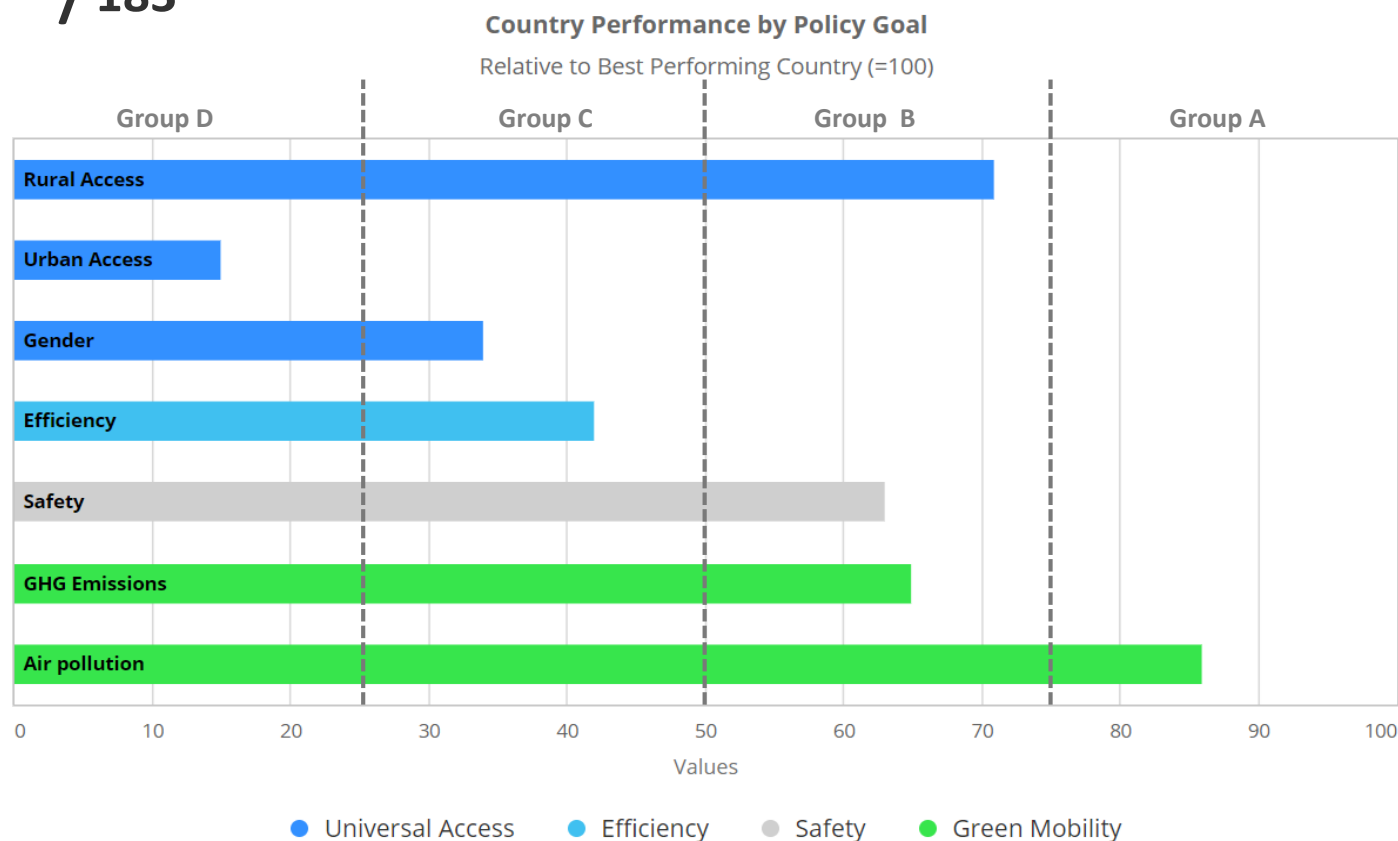
Sustainable Mobility Rank

50th/183

Scale: 100 represents that country has achieved an aspirational target and 0 means the country is the farthest from the target.

Note: If data for a given policy goal (sub-goal) is not available, the policy (sub-goal) is not displayed in the bar chart.

Indicators: Rural Access Index, Rapid Transit to Resident Ratio, Percentage of Female Workers in Transport, Logistics Performance Index, Mortality Caused by Road Traffic Injury, Transport-Related GHG Emissions per Capita, and PM 2.5 Air Pollution Annual Exposure.



EXPLORE: CATALOGUE OF 180+ POLICY MEASURES

| | | | |
|--------------------|----------------------|--------------------------|----------------------------|
| Toolbox | Select Toolbox ▼ | Thematic Area | Select Thematic Area ▼ |
| Mode | Select Mode ▼ | Type of Transport | Select Type of Transport ▼ |
| Policy Goal | Select Policy Goal ▼ | Country Relevance | Select Country Relevance ▼ |

Apply

| Policy Measure | Short Description |
|--|--|
| Accede to and Implement International Conventions | Accede to and implement relevant international agreements and conventions that address one or more policy goals, for example, the TIR Convention, the WTO Trade Facilitation Agreement, or core road safety-related UN legal instruments. |
| Address Green and Low Carbon Shipping in Transport Plans | Ensure that the national transport plan addresses low-carbon and green shipping and describes the financial instruments to support it, including incentives and technology support programs. |
| Adopt Best Practices for Train Driving and Timetabling | Adopt train driving and timetabling practices, such as eco-driving, automatic train operations, driver advisory systems, synchronization of acceleration and braking, and adapting train capacity to activity, to optimize energy consumption. |
| Adopt Building Back Better Principle for Reconstruction | Adopt a building back better principle, i.e. rebuilding work after disasters and conflicts to be conducted with a decentralized participatory approach for a more cost-effective and sustainable recovery of transport systems. |
| Adopt Emission Standards for Aircraft | Adopt the ICAO engine emissions standards and implement the ICAO airport air quality manual to minimize the impact of aviation emissions on local air quality (LAQ). |
| Adopt Emission Standards for Rail Transport | Adopt emission standards for diesel-powered locomotives and railcars, for example, the non-road mobile machinery by European Commission regulations. |
| Adopt Noise Management Approaches to Aircraft | Adopt the ICAO balanced approach to aircraft noise management to minimize the number of people affected by significant aircraft noise. |

PRIORITIZE: POLICIES IN AN ACTION PLAN



Customize the Action Plan

Show Impact Scores Show Country-Relevance Scores

Sort By Choose sort option ▼

Choose policy to add ▼

ADD

Delete Policy



☐ **Make Public Transport Fares Affordable for the Poor**

Make public transport fares affordable for the poor using means testes approaches to ensure cost-recovering mechanisms.

☐ **Consult with Stakeholders during the Full Project Cycle**

Consult extensively with stakeholders during project formulation and establish a framework for continuous consultation during project implementation.

☐ **Ensure Women's Participation in Consultation Processes**

Ensure that voices of women are upheld during pre- and post-project consultation.

☐ **Implement Anti-Harassment Campaigns in Public Transport**

Implement anti-harassment awareness campaigns in public transport spaces.

☐ **Raise Road Safety Awareness**

Ensure sustained communication of road safety as a core business for government and society, emphasize the shared responsibility for the delivery of road safety interventions, and raise awareness about the dangers of speeding.

GRA COVERAGE: 183 COUNTRIES

Including ALL African Countries:





WHAT'S
NEXT

IMPLEMENTATION OF THE GRA



South Africa is the first country to express their interest to champion sustainable mobility by piloting the implementation of the GRA

They will benefit from:

- A **standardized evaluation** of country performances on mobility (including universal access, safety, efficiency, and green mobility) and the SDGs
- **Benchmark of mobility performances** relative to other countries in the world
- **Analysis of strengths and weaknesses** of the current mobility system
- **Proposed policies** that are most impactful to achieve sustainable mobility and the SDGs – with costing.
- An **investment plan** with dedicated projects

How can your country get involved?

If you are a **country interested in identifying your path** toward achieving sustainable mobility, we would like to extend you an invitation to engage with us. Please contact SuM4All via sum4all@worldbankgroup.org



for inquiries contact
sum4all@worldbankgroup.org



visit our website
www.sum4all.org



join the conversation on
[#SuM4All](https://twitter.com/SuM4All)



join our linked in group
Sustainable Mobility for All
(SuM4All)



ANNEX

SDG TARGETS AND UNIVERSAL ACCESS



UNIVERSAL
ACCESS

SDGs



SDGs Targets

SDG 5.1: End all forms of discrimination against all women and girls everywhere

SDG 5.2: Eliminate all forms of violence against all women and girls in the public and private spheres, including trafficking and sexual and other types of exploitation

SDG 5.5: Ensure women's full and effective participation and equal opportunities for leadership at all levels of decision-making in political, economic and public life

SDG 9.1: Develop quality, reliable, sustainable and resilient infrastructure, including regional and transborder infrastructure, to support economic development and human well-being, with a focus on affordable and equitable access for all

SDG 10.7: Facilitate orderly, safe, regular and responsible migration and mobility of people, including through the implementation of planned and well-managed migration policies

SDG 11.2: By 2030, provide access to safe, affordable, accessible and sustainable transport systems for all, improving road safety, notably by expanding public transport, with special attention to the needs of those in vulnerable situations, women, children, persons with disabilities and older persons

SDG TARGETS AND EFFICIENCY



EFFICIENCY

SDGs



SDGs Targets

SDG 7.3: By 2030, double the global rate of improvement in energy efficiency

SDG 9.1: Develop quality, reliable, sustainable and resilient infrastructure, including regional and transborder infrastructure, to support economic development and human well-being, with a focus on affordable and equitable access for all

SDG 9.4: By 2030, upgrade infrastructure and retrofit industries to make them sustainable, with increased resource-use efficiency and greater adoption of clean and environmentally sound technologies and industrial processes, with all countries taking action in accordance with their respective capabilities

SDG 12.3 By 2030, halve per capita global food waste at the retail and consumer levels and reduce food losses along production and supply chains, including post-harvest losses

SDG 12c: Rationalize inefficient fossil-fuel subsidies that encourage wasteful consumption by removing market distortions, in accordance with national circumstances, including by restructuring taxation and phasing out those harmful subsidies, where they exist, to reflect their environmental impacts, taking fully into account the specific needs and conditions of developing countries and minimizing the possible adverse impacts on their development in a manner that protects the poor and the affected communities

SDG 17.14: Enhance policy coherence for sustainable development

SDG TARGETS AND SAFETY



SAFETY

SDGs



SDGs Targets

SDG 3.6: By 2020, halve the number of global deaths and injuries from road traffic accidents

SDG 11.2: By 2030, provide access to safe, affordable, accessible and sustainable transport systems for all, improving road safety, notably by expanding public transport, with special attention to the needs of those in vulnerable situations, women, children, persons with disabilities and older persons

SDG TARGETS AND GREEN MOBILITY



GREEN MOBILITY

SDGs



SDG 3.4: By 2030, reduce by one third premature mortality from non-communicable diseases through prevention and treatment and promote mental health and well-being

SDG 3.9: By 2030, substantially reduce the number of deaths and illnesses from hazardous chemicals and air, water and soil pollution and contamination

SDG 7.3: By 2030, double the global rate of improvement in energy efficiency

SDG 9.4: By 2030, upgrade infrastructure and retrofit industries to make them sustainable, with increased resource-use efficiency and greater adoption of clean and environmentally sound technologies and industrial processes, with all countries taking action in accordance with their respective capabilities

SDG 11.6: By 2030, reduce the adverse per capita environmental impact of cities, including by paying special attention to air quality and municipal and other waste management

SDG 13.1: Strengthen resilience and adaptive capacity to climate-related hazards and natural disasters in all countries

SDG 13.2: Integrate climate change measures into national policies, strategies and planning