

**REPUBLIC
OF SENEGAL**



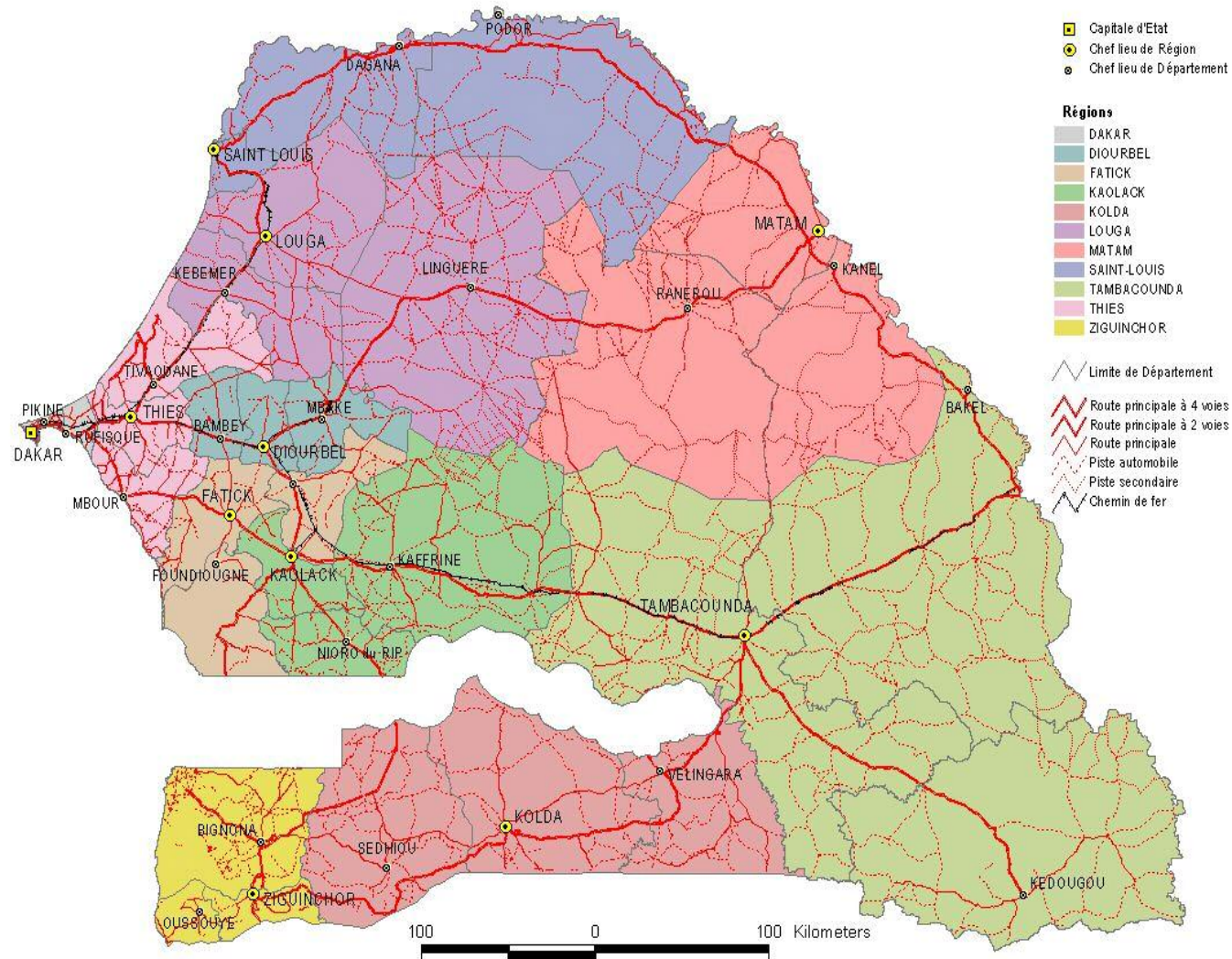
**SECOND SECTOR
PROGRAM OF
TRANSPORTATION
(PST2)**



- The map of Senegal



AIDS PREVALENCE RATE



REGIONS

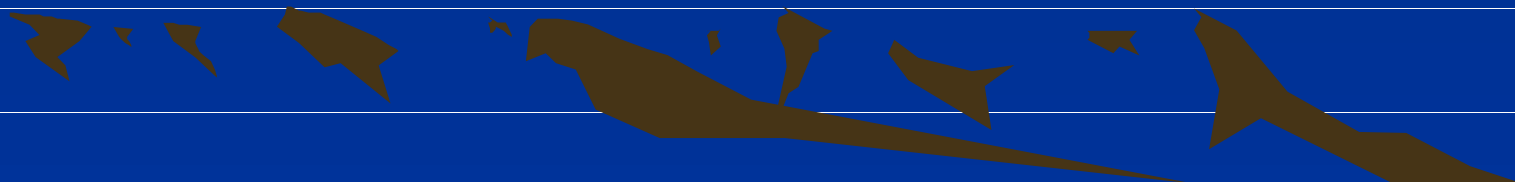
Dakar: 1,7
 Diourbel:1%
 Fatick:1,2%
 Kaolack:2%
 Kolda:2,8%
 Louga:0,8%
 Matam:2,2%
 Thiès: 0,7%
 Saint Louis: 0,5%
 Tambacounda:2,6%
 Ziguinchor:2,3%

CELCO PROGRAM

Advocacy workshop chaired by the Minister of Transport to which the Minister of Health was invited, with the presence of Managers of the transport sub sectors

The subjects discussed were:

- Impact of the diseases on the Transport sector workers.
- Costs & benefits of a program of the HIV/AIDS policy in a working place.

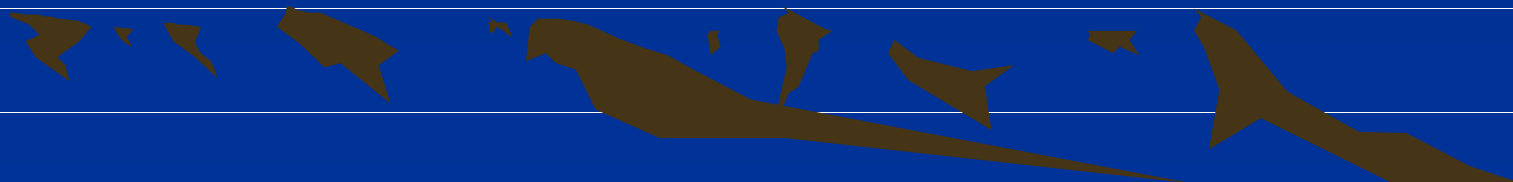


The World Bank through a Coordination Unit of the Second Sectoral Programme of Transport (Celco-PST2) financed a study diagnosis and the development of an action plan for fighting against STD/HIV/AIDS in the transport sector in Senegal



CELCO PROGRAM

Intermediate STI/HIV/AIDS activities in the formal and informal transport sector carried out by 2 NGOs SANFAM and MIDA.



Intermediate STI/HIV/AIDS activities in the formal sector



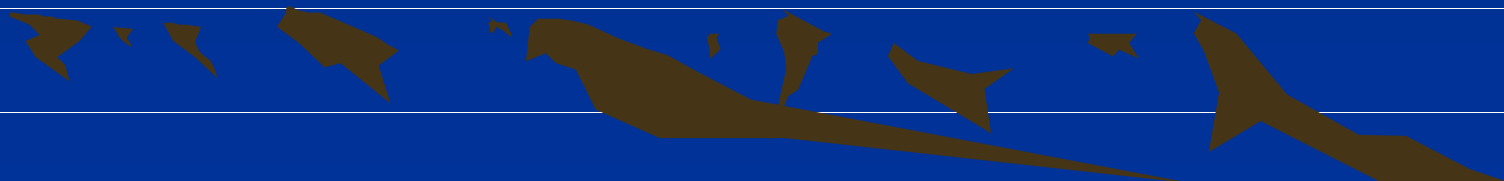
SANFAM Pilot Program

- Today all the sub sectors of transportation have been touched in preventing and fighting AIDS: Airports, Ports, railways and roads
- Various IEC supports specific to transportation sector have been conceptualized and used effectively
- Some companies are implementing really sustainable program of preventing and fighting HIV/AIDS like ASECNA, SNCS, SONAPAD and Fougerolle
- Some others companies which were not included in the pilot program have started recently their proper program of preventing and fighting HIV/AIDS: CDE, SINCO and CITAP in road constructions activities
- Unfortunately some rare companies were reluctant although they received important lots of materials and condoms from SANFAM : Society Jean Lefèvre and CSE (roads construction)



Intermediate STI/HIV/AIDS activities in the informal sector

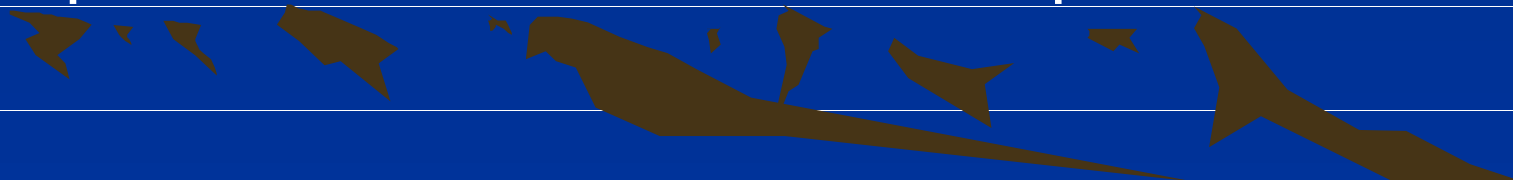
MIDA ACTIVITIES



MIDA Pilot Program

Mida activities aimed at reducing the negative impact of AIDS among users of transportation sites and mitigate the spread of HIV/AIDS in the sector.

- Training users of bus terminals in Khar Yalla, Khourounar Pikine, and Colobane to own the STI/HIV/AIDS prevention activities;
- Training of Peers Educators in communication skills and IEC/BCC for them to ensure sustainable prevention activities in the respective sites

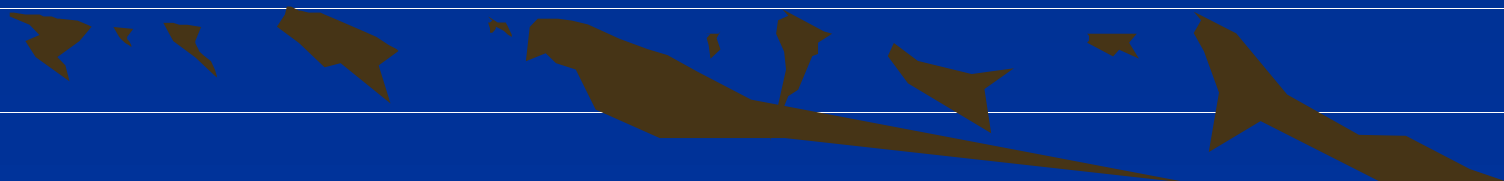


Ultimate Impact of MIDA Intervention in the Area of Informal Transportation

- ***Taboos, false beliefs, inappropriate perceptions, behaviours and attitudes in relation to HIV/AIDS were addressed and overcome.***
- ***Users of the three bus terminals mobilize a full day for voluntary testing***



THE NATIONAL RESPONSE IN THE TRANSPORT SECTOR



Matters Diagram



determinants of analyzes

Action plan

Components of the Action plan

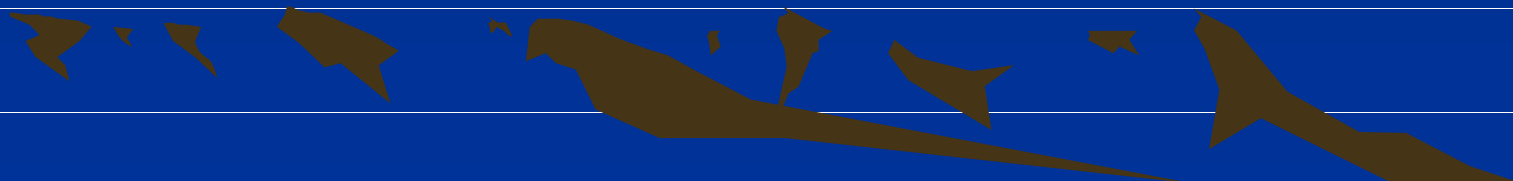
③ COMPONENT 1 : PROMOTION ON BEHAVIOR CHANGE FOR REDUCING RISK OF INFECTION TO TDS/HIV/AIDS

③ COMPONENT 2 : PROMOTING HIV TEST TO VOLUNTEERS

③ COMPONENT 3 : REINFORCE THE INVOLVEMENT OF OPINION LEADERS SUCH AS TRANSPORTATION AND COMMUNITY IN THE FIGHT AGAINST HIV

③ COMPONENT 4 : EVALUATION /AND FOLLOW UP

③ COMPONENT 5 : MAKE SURE THE ACTION PLAN IS IMPLEMENTED



Action plan

BUDGET

<u>sectors</u>	<u>amont</u>
Road	<u>295 .420.000 F cfa</u>
Maritime	<u>144 .162.500 F cfa</u>
railroad	<u>129.717.500 F cfa</u>
Airways	<u>85.392.500 F cfa</u>
<u>TOTAL</u>	<u>654.692.500 F cfa</u>

