

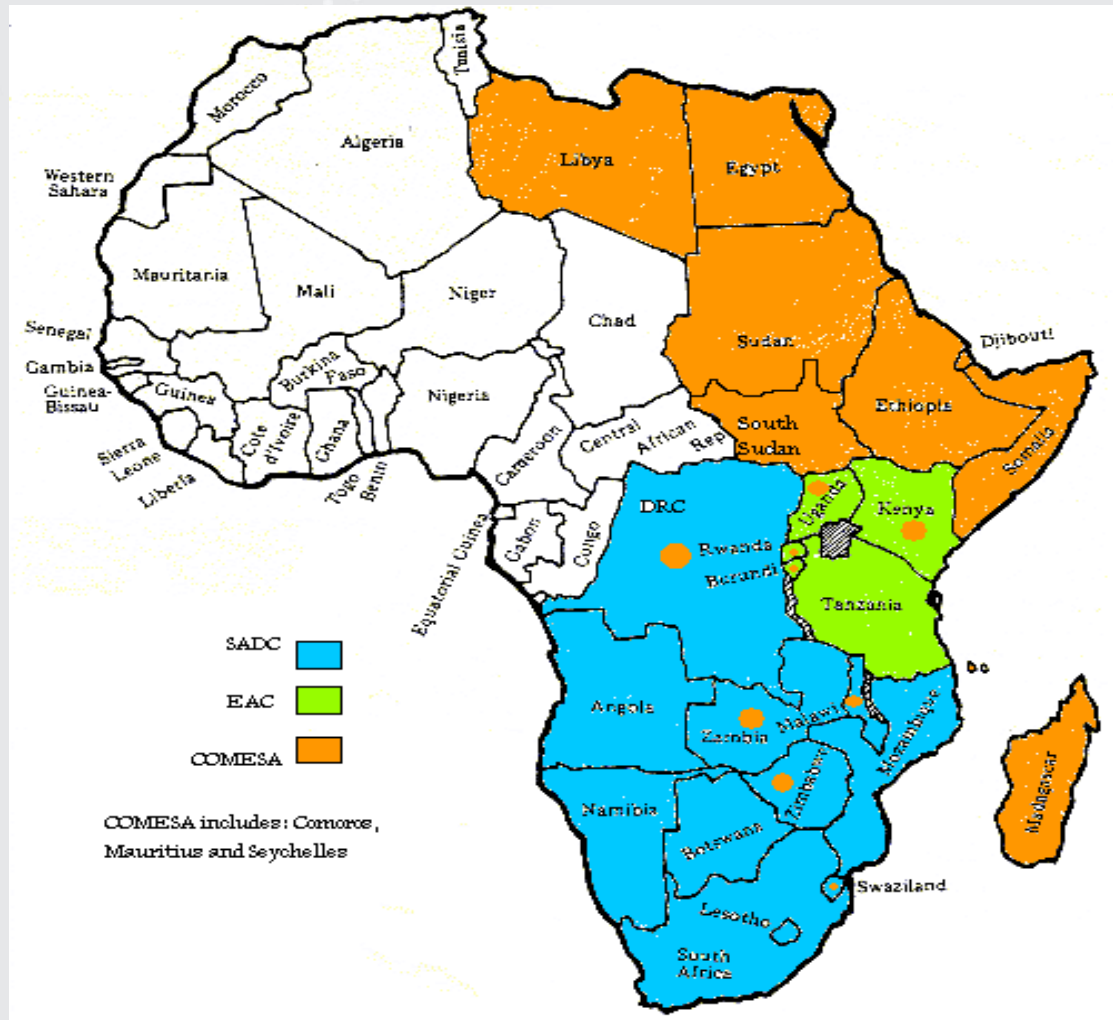
TRIPARTITE REGIONAL GUIDELINES ON ROADSIDE STATIONS

Preliminary Findings and Priority Areas of Focus

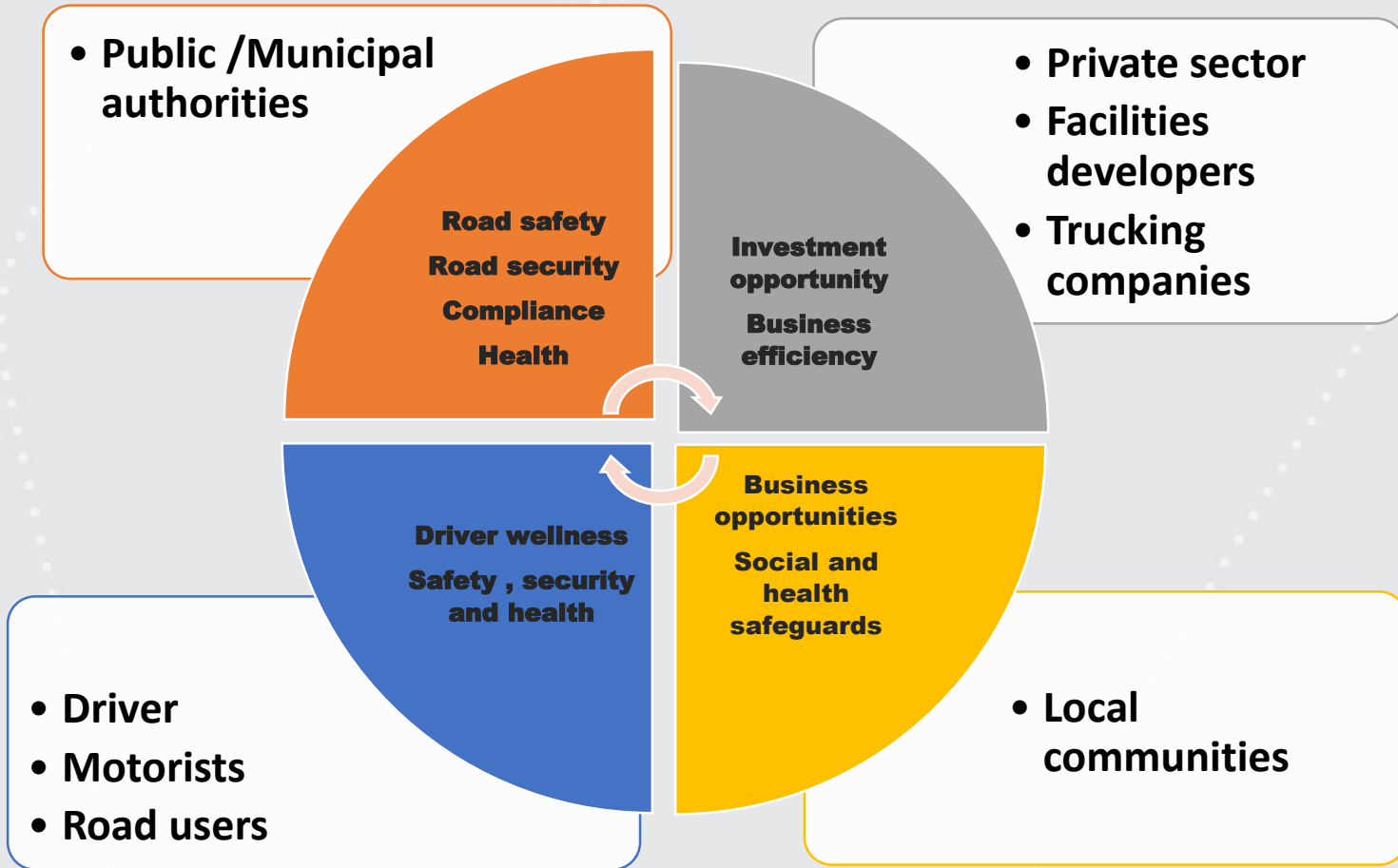
Silas Kanamugire

Abuja, July 2, 2018

A Tripartite Project



RSS : An inclusive and consensual tool



Why RSS?

- Improving the productivity/competitiveness of road transport operations along Tripartite transport corridors by:
 - ✓ Ensuring minimum operating costs, shortest transit time and reliable service for the transportation of cargo
 - ✓ Providing maximum comfort for both drivers and passengers

Why RSS?

- Improving the productivity/competitiveness of road transport operations by (cont.):
 - ✓ Reducing road crashes
 - ✓ Reducing highway crime by providing secure parking areas

Why RSS?

- Improving the health of truck drivers and other motorists
- Mitigation of the adverse effects of transport operations on the safety and health of the local communities and on the environment along the Tripartite transport corridors

Why RSS?

- Transforming the Tripartite trade corridors into opportunities for economic and social empowerment for the local communities by turning on new business and other income generation opportunities.

Key RSS Functions

- Service Centers for long distance road users: safe, secure, affordable and adequately located parking areas and other service/rest facilities
- Health/Wellness centers for truck drivers and other motorists, passengers and the local communities;
- Business hubs for local communities: stores, markets and rooms to showcase and sell their goods, services and cultural/natural heritage

Preliminary (Priority) Areas of Focus for RSS Guidelines

- **Five preliminary areas of focus (study still at an early stage)**
 - RSS Planning
 - RSS Locations
 - RSS Layout and Specifications
 - Service Delivery
 - Enabling Legal and Institutional Environment

RSS Planning

- Developer/Lead agency to lead the planning process with a clearly defined agenda and the required capacity
- Effectiveness in stakeholder mapping and consultations
 - Securing the involvement and commitment of key stakeholders;
 - Understanding the interests of all stakeholder groups

RSS Planning

- Financing of RSS Development and Operation:
 - Seed funding for project preparation
 - Different strategic scenarios for raising funding for the development and operation of the RSS: PPP; blending with other projects (e.g. road construction)

RSS Planning

- Operating framework:
 - Clear sharing of responsibilities and costs among the parties to the project particularly in case of PPP
 - Institutional structure
 - Operating costs (clarify how they should be shared)

RSS Locations

- **Positioning** of RSS sites along transport corridors
 - Distance from other RSS Sites: 100km?
 - Distance from border crossings, weighbridges and other traffic checkpoints: 1 km?
 - Distance from key logistics nodes (sea ports, inland cargo terminals, inland waterway ports, railheads)
 - Distance from Urban areas

RSS Locations

- **Physical** requirements for RSS sites
 - Availability and ease of acquisition of land
 - Safe distance from the noise of highway
 - Favorable topography of the terrain at the location (not being a hazard to safety)
 - Characteristics of the corridor motorway at the location (allowing access to/from the RSS under optimum safety conditions): road alignment, road crossings, interchanges

RSS Locations

- Physical Requirements for RSS Sites (cont.)
 - Access to electricity and clean water
 - Likely impact on the environment: (no hazard to the environment);
 - Road safety profile of the location (black-spot? Red-spot?)

RSS Locations

- Non-Physical Requirements for RSS Sites
 - Existence and capacity of a developer or promoter
 - Local community's interest, needs/demands and capacity
 - Unique opportunities such as exceptional tourism potential or endowment in unique resources, products or services

RSS Locations

- Non-Physical Requirements for RSS Sites
 - Favorable security situation around the location
 - Potential for synergies through integration with other development projects in the area: road construction, agro-logistics; border post improvement

RSS Layout and Specifications

- **General Considerations**

- Segregation: cargo area, passenger area, bonded cargo area, dangerous goods area
- Noise factor: rest areas far from the motorway and not adjacent to parking areas
- Facilities layout/design tailored to their expected usage in order to optimize the service to the users
- Facilities layout/design to reflect the local characteristics (economic, social, cultural and natural)

RSS Layout and Specifications

- **General Considerations**
 - Affordability of construction and maintenance costs
 - Modular designs that accommodate future expansion.
 - Provide maximum room for vehicles to manoeuvre and people to move around the RSS area in the safest and most effective manner.
 - Ensure optimal visibility around the RSS area to allow effective security patrols and CCTV surveillance.

RSS Layout and Specifications

- **RSS internal** infrastructure
 - Internal driveways and walkways with the appropriate road markings and signs that guarantee safety and ease of movement
 - ICT infrastructure
 - Clean water and electricity connections
 - Drainage infrastructure for waste and flood water as well as sewage
 - Landscaping that provides for sufficient green areas

RSS Layout and Specifications

- RSS **parking** areas and other **user-service** facilities (*based on demonstrated demand*)
 - Parking slots
 - Rest and refreshment rooms
 - Wellness centers/clinics;
 - Vehicle workshops including outlets for spare parts and washing bays
 - Restaurants, shops, open markets
 - Centers for providing information on corridor and also on the local community;

RSS Layout and Specifications

- RSS **parking** areas and other **user-service** facilities (cont.)
 - Banks and/or forex bureaus
 - Fuel stations including outlets for lubricants
 - Warehouses
 - Leisure facilities
 - Administration office

RSS Layout and Specifications

- **Each individual facility**
 - Easily accessible through the RSS's internal roadways and walkways
 - Adequately supplied with electrical power and clean water
 - Connected to the waste water and sewage drainage system
 - Well lit inside and outside
 - Well covered by the RSS internal public announcement system

RSS Layout and Specifications

- **RSS external access and connectivity** (to the national infrastructure networks)
 - RSS layout that optimizes the traffic movement between the RSS and the motorway
 - RSS road connections to and from the motorway
 - Pedestrian flyovers over the main highway at the RSS site
 - RSS connections to the national power grid and water distribution system

Service Delivery

- Service to corridor users
 - Availability of online information on location of RSS and the services on offer
 - Range of products/services that respond to the consumer habits of different user groups; for example truck drivers are known to have peculiar truck spending patterns
 - Quality of service: e.g. comfort, hygiene, quality of food/drinks and customer care

Service Delivery

- Service to corridor users (cont.)
 - **Reliability** of services: services consistently available to the corridor users and the local community
 - **Affordability** of the services: prices should not be significantly higher than in the “without-project”

Service Delivery

- **Safety** of corridor users and local communities (within RSS and along the motorway): road safety education, vehicle breakdown services
- **Security** for corridor users and local communities: surveillance, rapid response, staff training

Service Delivery

- **Health** services to corridor users and local communities: trauma center, mobile clinics, ambulance services.
- Protection of the **Environment**
- Service to the **local communities** along transport corridors
 - Affordable rates for renting shops, stalls and business assets
 - Favorable business model (e.g. availing some business assets free of charge; profit sharing rather than rent)

Enabling Legal and Institutional Environment

- **Legal** environment: Tripartite agreement, model laws, national laws and regulations
- **Institutional** frameworks and coordination
 - Regional-level: RECs/CMIs statutory organs, stakeholders working groups, implementation units within RECs or CMIs

Enabling Legal and Institutional Environment

- **Institutional** frameworks and coordination (cont.)
 - National and County/Local Government-level: lead agencies, steering committees/taskforces, implementation units
 - Project-level Institutional Arrangements: PPP

THANK YOU

